



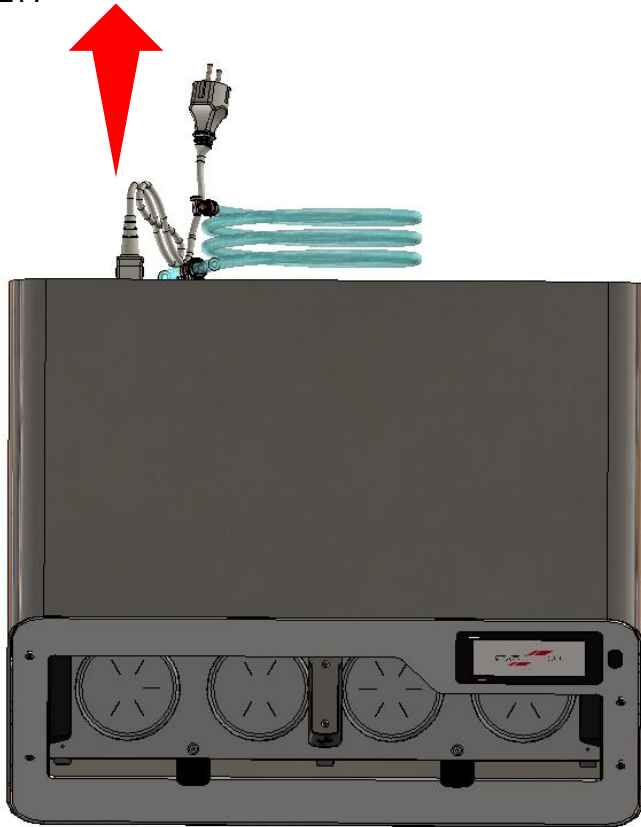
# Repair Manual for BIOSTAR® 4-Aligner

1 Alignment switch compressed air

# Alignment / Replacement switch compressed air

**ERROR 005 Operation cancelled because the end position (bottom) of the traverse (pressure chamber position) could not be reached**

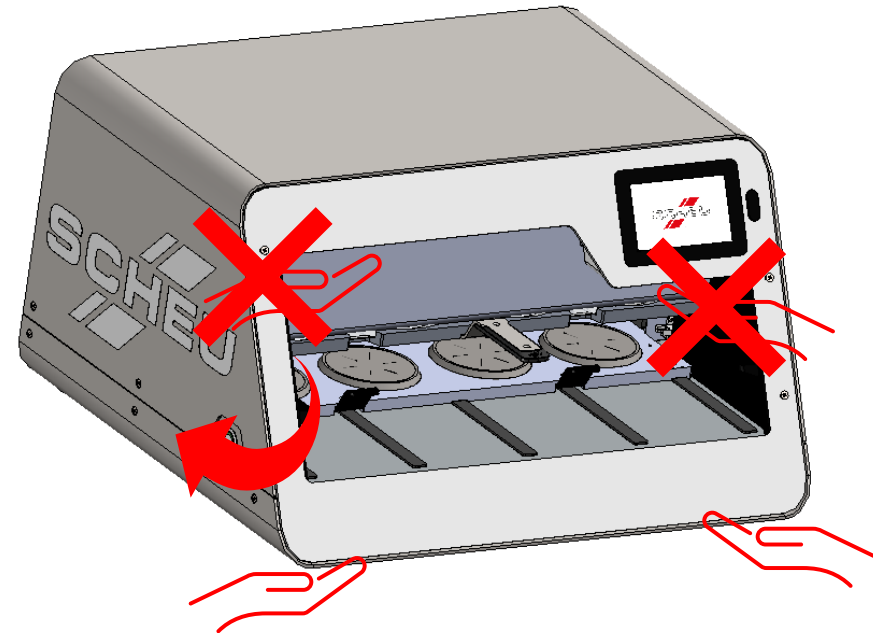
- 1** DISCONNECT THE DEVICE FROM THE POWER SUPPLY!



- 2** Turn the appliance so that you can reach the screws on both sides.

Do NOT lift the device by the FRONT panel but reach under the device!

Make sure that the current software version is installed.



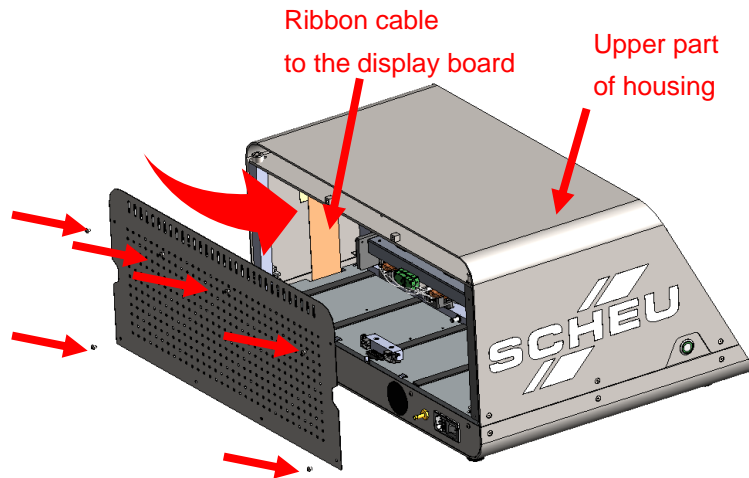
# Alignment / Replacement switch compressed air

**ERROR 005 Operation cancelled because the end position (bottom) of the traverse (pressure chamber position) could not be reached**

**3**

Loosen the 6 screws on the rear panel.

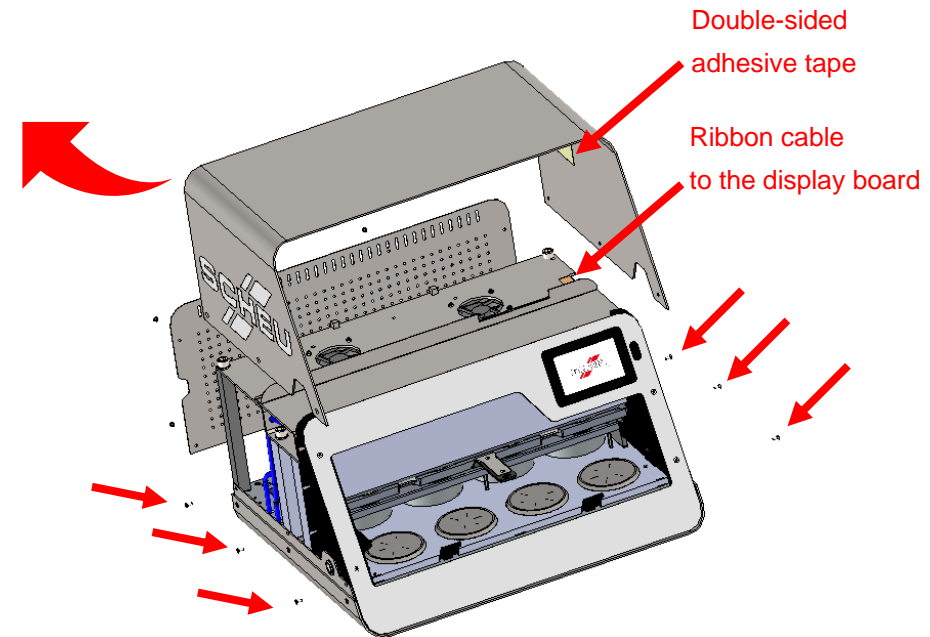
Then press on the side of the upper part of the housing to carefully detach the ribbon cable from the double-sided adhesive tape on the upper part of the housing.



**4**

Remove the 6 screws from the upper part of the housing.

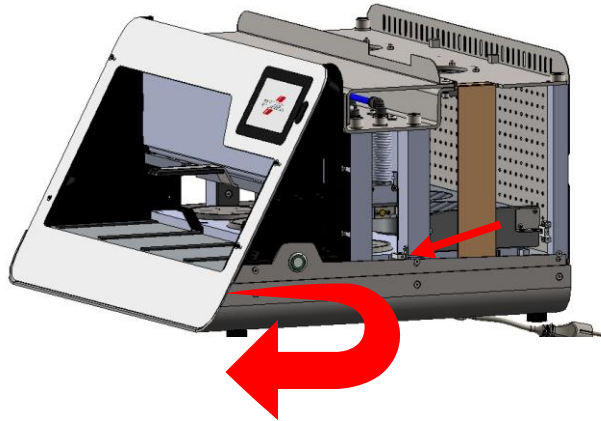
Caution! If necessary, remove the ribbon cable from the adhesive tape again.



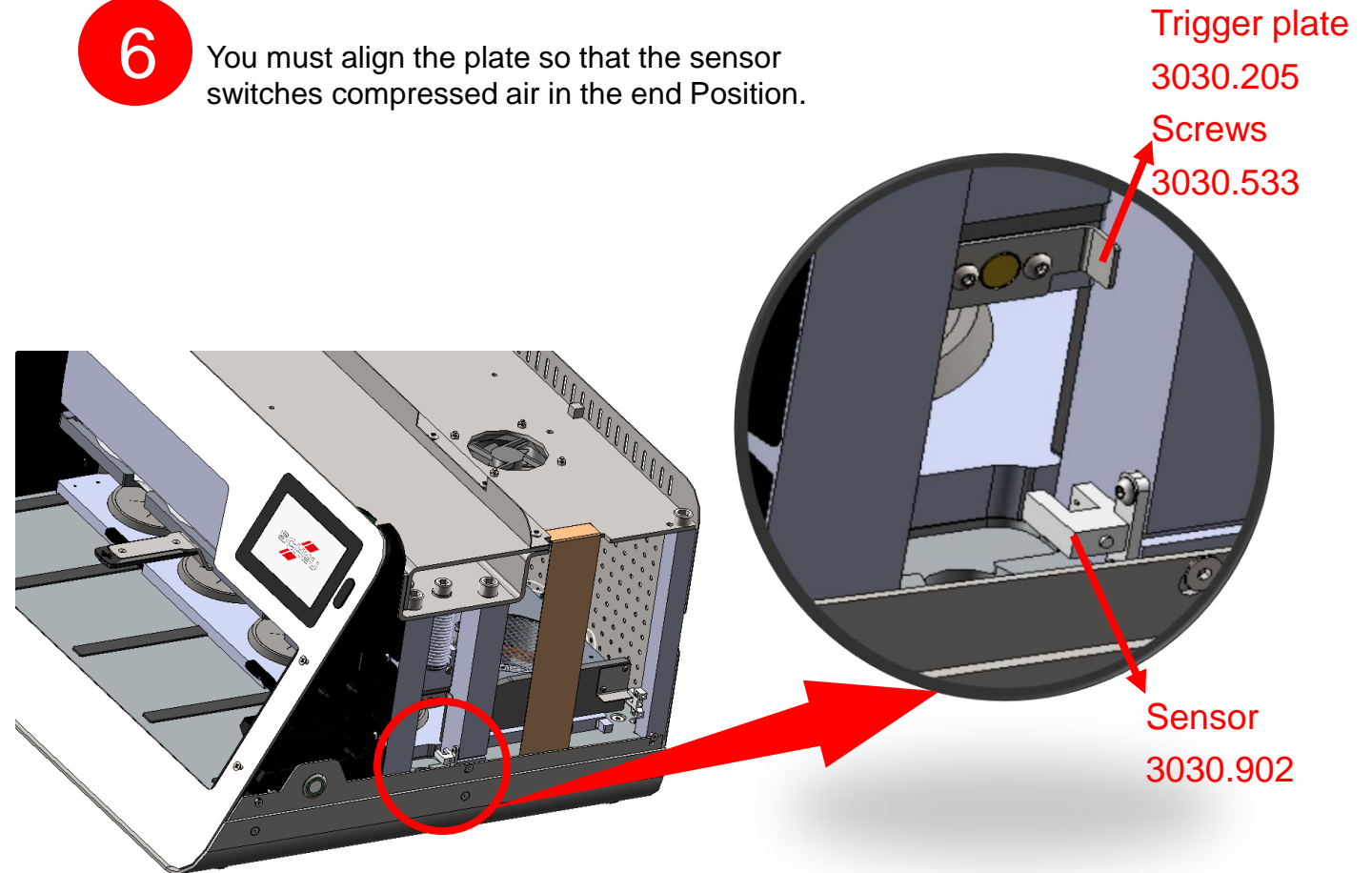
# Alignment / Replacement switch compressed air

**ERROR 005 Operation cancelled because the end position (bottom) of the traverse (pressure chamber position) could not be reached**

- 5** Turn the device so that you can reach the sensors from the side.



- 6** You must align the plate so that the sensor switches compressed air in the end Position.

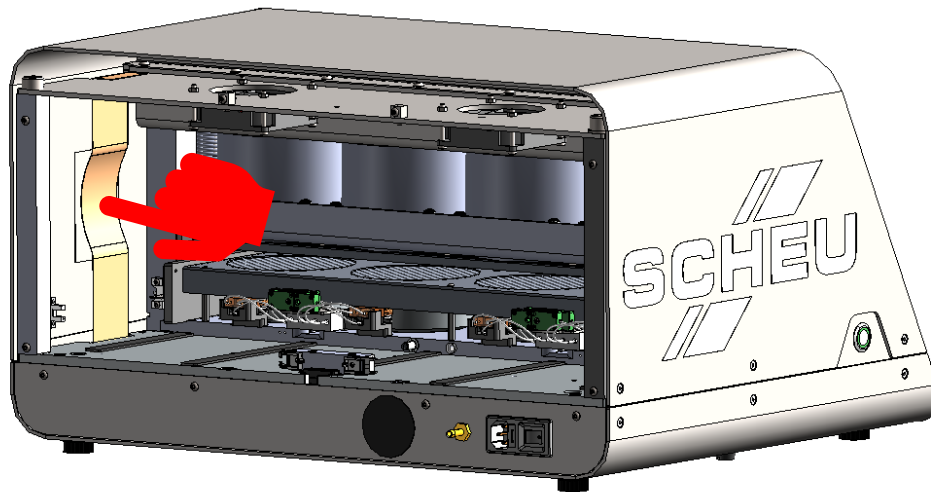


# Alignment / Replacement switch compressed air

**ERROR 005 Operation cancelled because the end position (bottom) of the traverse (pressure chamber position) could not be reached**

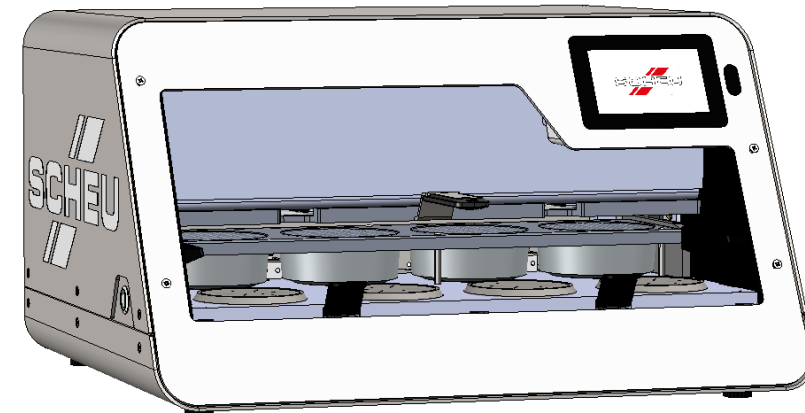
7

Slide on the upper part of the housing and screw it to the side with the 6 screws. Then press the ribbon cable onto the double-sided adhesive tape on the upper part of the housing. This prevents the ribbon cable from becoming entangled with the reflector plate and, in the worst case, from being pulled off.



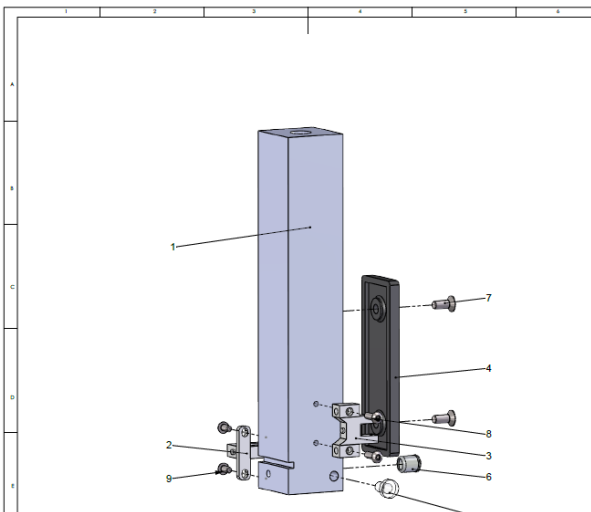
8

Now fasten the back panel with the 6 screws.



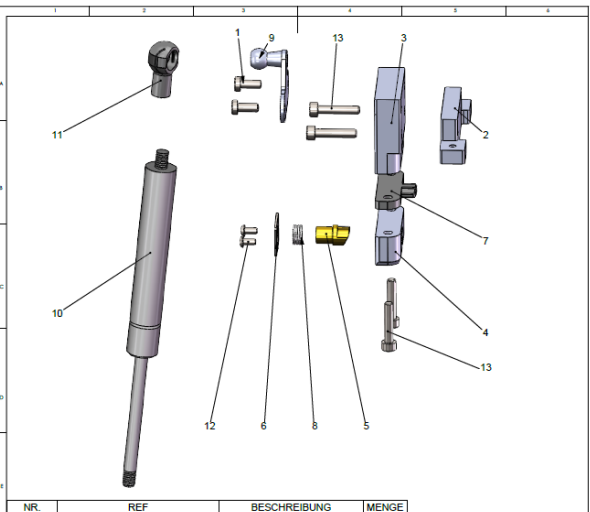
# Alignment / Replacement switch compressed air

ERROR 005 Operation cancelled because the end position (bottom) of the traverse (pressure chamber position) could not be reached



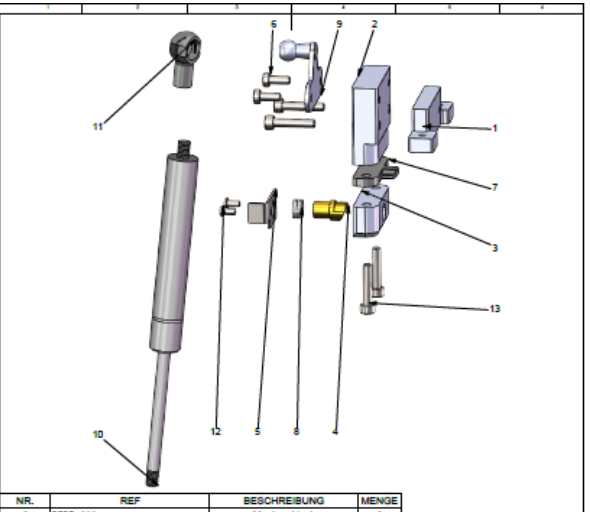
Nr.	REF	BESCHREIBUNG	MENGE
1	3030_107_V2	Säule Mitte Rechts	1
2	3030_902	Sensor PM T45K	1
3	3030_901	Sensor PM K45	1
4	3030_301	Abstandhalter Säulen Mitte	1
5	3030_517	Gummianschlag	1
6	3030_503	Druckstück AD8	1
7	3030_532	DIN 7991 - M4 x 10 - 5.6N	2
8	3030_535	Flachkopfschraube ISO 7380 - M3x10	2
9	3030_533	ISO 7380 - M3 x 6	2

**BG Säule Mitte Rechts**  
BIOSTAR 4-Aligner  
3030\_814\_V1



Nr.	REF	BESCHREIBUNG	MENGE
1	3030_538	Flachkopfschraube mit Innensechskant M4x10 ISO 7380	2
2	3030_111	Montageblock	1
3	3030_112	Distanzblock	1
4	3030_114	Halter Druckstück	1
5	3030_115	Druckstück	1
6	3030_205	Bolzenschlossplatte	1
7	3030_113	Führungsplatte	1
8	3030_508	Feder 0,75x9x15	1
9	3030_558	Endstück Kugelzapfen	1
10	3030_509	Gasfeder	1
11	3030_556	Kugelkopf für Gasfeder	1
12	3030_533	Flachkopfschraube mit Innensechskant M3x6 ISO 7380	2
13	3030_563	Flachkopfschraube mit Innensechskant M4x20 ISO 7380 V2	4

**BG Gasfeder Links**  
BIOSTAR 4-Aligner  
3030\_825 BG Gasfeder Links



Nr.	REF	BESCHREIBUNG	MENGE
1	3030_111	Montageblock	1
2	3030_112	Distanzblock	1
3	3030_114	Halter Druckstück	1
4	3030_115	Druckstück	1
5	3030_205	Bolzenschlossplatte	1
6	3030_538	Flachkopfschraube mit Innensechskant M4x10 ISO 7380	2
7	3030_113	Führungsplatte	1
8	3030_508	Feder 0,75x9x15	1
9	3030_558	Endstück Kugelzapfen	1
10	3030_509	Gasfeder	1
11	3030_556	Kugelkopf für Gasfeder	1
12	3030_533	Flachkopfschraube mit Innensechskant M3x6 ISO 7380	2
13	3030_563	Flachkopfschraube mit Innensechskant M4x20 ISO 7380	4

**BG Gasfeder Rechts**  
BIOSTAR 4-Aligner  
3030\_826 BG Gasfeder Rechts